



GAT MONTHLY MEMBERSHIP PROGRESS REPORT

Results as of: 4/30/2022

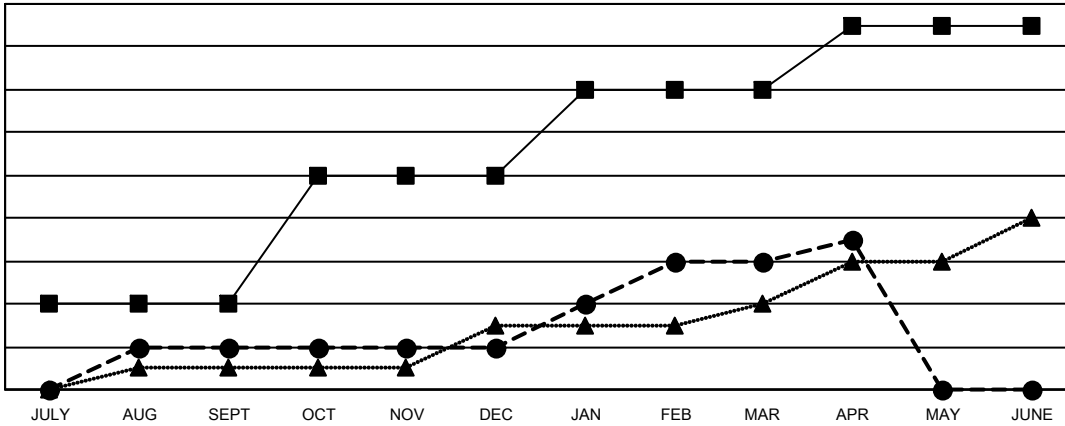
Multiple District 35

LOCATION: FLORIDA

Clubs			
RESULTS FOR 2021-2022			
QUARTER	NEW CLUB GOAL	NEW CLUBS	DROPPED CLUBS
JULY/AUG/SEPT	4	2	3
OCT/NOV/DEC	6	0	8
JAN/FEB/MAR	4	4	1
APR/MAY/JUNE	3	1	0

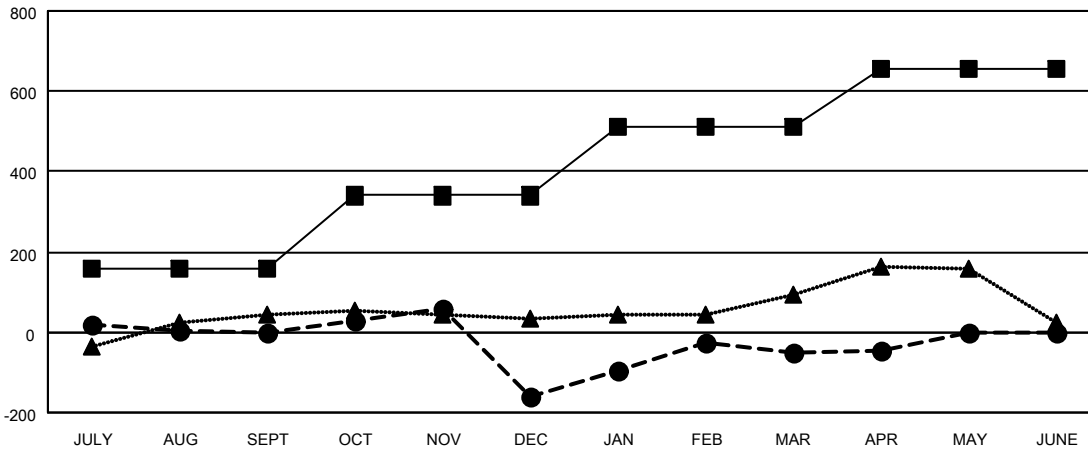
Members			
RESULTS FOR 2021-2022			
QUARTER	MEMBER GROWTH NET GOAL	MEMBER GROWTH ACTUAL	DROPPED MEMBERS ACTUAL (including transfers)
JULY/AUG/SEPT	160	272	229
OCT/NOV/DEC	180	248	376
JAN/FEB/MAR	170	383	220
APR/MAY/JUNE	145	92	78

GOALS AND ACTUAL NEW CLUBS CUMULATIVE



- - CURRENT YEAR GOALS FOR NEW CLUBS
- - CURRENT YEAR ACTUAL NEW CLUBS
- ▲ - LAST YEAR ACTUAL NEW CLUBS

GOALS AND ACTUAL MEMBERS CUMULATIVE



- - MEMBER GROWTH NET GOAL
- - MEMBER GROWTH ACTUAL
- ▲ - LAST YEAR MEMBERSHIP ACTUAL

DROPPED CLUBS: 12	
DROPPED MEMBERS	
DECEASED	83
CLUB CANCELLED	137
OTHER	683
TOTAL	903

146 CLUBS OF 224 ADDED 1 OR MORE NEW MEMBERS

[CLICK HERE FOR CUMULATIVE MEMBERSHIP DATA](#)

GENDER DISTRIBUTION	
MALE	2,664 (53.39%)
FEMALE	2,326 (46.61%)
NON BINARY	0 (0.00%)
PREFER NOT TO ANSWER	0 (0.00%)
TOTAL FAMILY UNIT MEMBERS	1,176
FAMILY MEMBERS PAYING HALF DUES	603